

Youth Connections

Linking Youth, Families & Communities

2009

ANNUAL REPORT



LETTER FROM THE PRESIDENT

February 2010

Greetings from the Youth Connections Board of Directors! We have had a very active year in 2009 and thus have much to share with you.

Youth Connections has provided services to youth and families in Johnson and Morgan counties for over 30 years. The primary purpose of our programs has always been to support families, children and adolescents who face certain obstacles to maintaining positive relationships that will allow them to thrive for a lifetime. We have recently tightened our mission to more intentionally impact at-risk youth of Johnson and Morgan Counties. To that end we have sharpened the focus of our programming through the Jump Start Mentoring Program to provide support and services to young people who present certain risk factors for social and behavioral problems. Aware of their importance in serving our target population, we also maintain key crisis intervention services to youth and families through programs such as Safe Place & Host Homes and Families in Transition.

Agency staff members share their energy, expertise and passion on a daily basis. Through our work in programs such as Safe Place and Host Homes we have recognized that some youth in our neighborhoods go without adequate food/shelter or much-needed emotional support. Youth Connections has played a significant role in organizing discussions about some of the compelling needs of this group in our community. These community outreach efforts to better understand and serve at-risk youth are under way due in part to the vision and leadership of Youth Connections and our collaboration with other service providers in Johnson and Morgan counties.

The year 2010 will be devoted to strengthening Youth Connections both inside and out. Our board engaged in a capacity-building process in 2009 made possible through the support of the United Way of Central Indiana. The end result of that process is an amazing sense of direction and purpose that will guide the work of the board and staff as we seek to position Youth Connections at the cutting edge in services to at-risk youth. We emerged with a more focused mission statement to "Serve at-risk youth through crisis intervention, community education and mentoring to foster positive relationships and self-worth." We also have renewed motivation to enhance the human resources we have available to us in fulfilling that mission. We welcome any of you with an interest in supporting our work by becoming a volunteer.

The ability to pursue our mission also hinges on developing adequate economic resources. Youth Connections faces some financial uncertainty due to cuts in several state grants that support our work with youth and families in this community. We seek your financial support. Our ability to maintain our services and bring new programs online to meet the needs of at-risk youth in Johnson and Morgan counties depends on your generosity. With your support, the board and staff of Youth Connections can ensure that all young people in our communities have a foundation for a productive and positive future.

Sincerely,
Denise M. Baird, President
Youth Connections Board of Directors

2010 BOARD OF TRUSTEES



President
Denise Baird
Franklin College
(Professor)



Vice President of Finance
Billy L. Bemis
Bemis Group
(Construction)



Vice President of Board Development and Governance
Kristi Bruther
Johnson County
Juvenile Detention
(Associate Director)



Vice President of Fund Development and Marketing
Paul Beczkiewicz
Franklin College
(Director of Planned Giving)



Vice President of Programs
Angela Morris
Johnson County
Juvenile Probation
(Probation Officer)



Trustee
Shannon Chambers
Johnson County
Juvenile Probation
(Probation Officer)



Trustee
Brandyn Ferguson
Endress+Hauser, Inc. (Vice President of Human Resources)



Trustee
Kristin Hughes
A Better Today, LLC (Private Practice, LCSW)



Trustee
Tess Key
Yard Signs, Inc. (Owner)



Trustee
Lisa Mahan
Franklin College
(Director IT Services)



Trustee
Joe McGuinness
Peters Municipal Consultants
(Accountant)



Trustee
Aileen Myer
Borders and library (sales/shelves books)



Trustee
John Reams
John M. Reams P.C.
(Attorney)



Trustee
Mark Richards
City of Greenwood
(Director of Community Development Services & City Engineer)



Executive Director
Katie Schlafer
Youth Connections

MISSION STATEMENT

Youth Connections serves at-risk youth through crisis intervention, community education and mentoring to foster positive relationships and self-worth.

CORE BELIEFS

Youth Connections believes that every young person in our community deserves:

- A healthy start
- Caring mentors and parent(s)
- Safe places to grow and learn
- Marketable skills
- Opportunities to serve

VISION

Youth Connections is the pre-eminent advocate for youth, and their families, in our community. We provide dynamic programs and services, which promote positive youth development and family support emphasizing community involvement and mutual respect. We achieve our goals through a dedicated, enthusiastic staff, a visionary board and effective collaborations with local courts and other entities. Our community and clients believe in us and invest in our future.



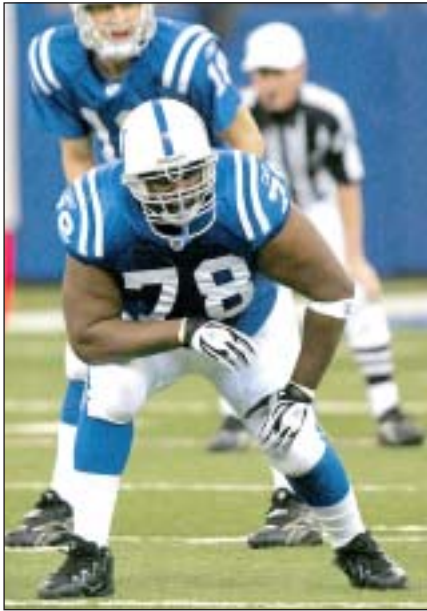
Youth Connections

701 W. Madison St., Suite H, Franklin, IN 46131

Phone: (317) 738-3273 / (765) 516-2264 (Morgan County)

Fax: (317) 738-0437

Web site: www.youthconnections.org



Former Colts Player Tarik Glenn to Speak at Breakfast of Champions 2010

Former Colts player, Tarik Glenn, will deliver the keynote address at Breakfast of Champions 2010, which will take place on April 8, 2010. The Breakfast, established to recognize Youth Connections programs and efforts in the community, is open to the public. Glenn will be available for pictures and autographs immediately after the Breakfast.

Tickets and tables are available for purchase until March 22, 2010.

For more information, contact:
 Dez Esper at intern@youthconnections.org
 or visit
www.youthconnections.org

2010 STAFF

Staff

Katie Schlafer, MSW
 Executive Director
director@youthconnections.org
 738-3273 ext. 101

Keri Lyn Powers
 Youth Programs Director
associate@youthconnections.org
 738-3273 ext. 106

Whitney Long
 Youth Development Coordinator
 (Morgan County)
youthdevelopment@youthconnections.org
 765-516-2264

Christine Bratton
 Family Programs Director
family@youthconnections.org
 738-3273 ext. 102

Kristi Tucker
 Safe Place/Host Homes Coordinator
safeplace@youthconnections.org
 738-3273 ext. 103

Patrick Jamison
 Jumpstart Mentoring Coordinator
jumpstart@youthconnections.org
 738-3273 ext. 104

Contractors
Custody Evaluators
 Rebecca Rominger, M.Ed 738-3273 ext. 310
 Nancy Speer, MSW 738-3273 ext. 311

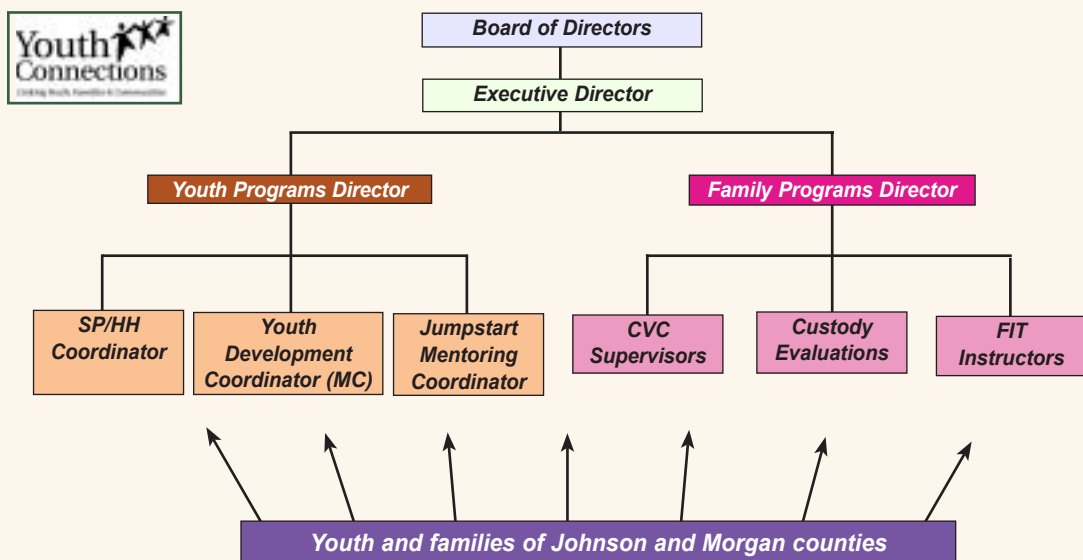
Families in Transition Instructors
 John Shafer, Ph.D
 John Bealke M.Ed
 Kelly Gilkerson, MSW
 Susanne Miller
 Ellen Mae Paris M.Ed
 Duane Roberts, MSW

Children's Visitation Center Supervisors
 Nick Burks
 Michelle Davis
 Bridget Deck
 Amanda Fulford
 Erica Mahan
 Rebecca Rominger, M.Ed



From left, front row: Patrick Jamison, Whitney King, Christine Bratton; back row: Katie Schlafer, Kristi Tucker, Keri Lyn Powers.

2009-2010 ORGANIZATIONAL CHART



For Fast Help



CALL 1-866-738-KIDS
or 738-KIDS
or TEXT 317-727-2571





Change Lives!
 Become a Mentor!
 For more information,
 contact:
 Patrick Jamison
jumpstart@youthconnections.org
 or (317) 738-3273, ext. 104

Youth Connections can be found on Facebook



Safe Place can be found on Facebook and MySpace



Jan.: Youth Connections starts a Facebook group



Jan. 12: Jumpstart Mentoring Coordinator position became full time
Jan.: Winter/spring group mentoring starts at Clark Pleasant Middle School
Jan. 27: YC met with Johnson County judges

Feb.: Updated Families in Transition Curriculum
Feb. 9: Jumpstart Mentoring conducted a Sex Ed workshop for female mentees.
Feb. 11: Morgan County Youth Worker Cafe
Feb. 25: YPIJC Kick-off at Scott Hall

March 2: Children our Best Investment conference - staff attended and we were a sponsor, meet with David Frizzell.
March 12: YPIJC Spring Grant Night (8 grants awarded by the Action Board)
March 12: 1st Annual Breakfast of Champions
March 16-20: National Safe Place Week
March 19: 1st presentations to Clark Pleasant Academy Students about YC programs.



JANUARY

FEBRUARY

MARCH

APRIL

MAY

JUNE



June 6: Colts Mini-camp College, took Clark Pleasant group mentoring boys to it
June 18/24: 1st Families Thursday adult evening opt



April: Safe Place (Safe Place Franklin, IN) Facebook profile (you can also find Safe Place from Franklin, IN on MySpace) Friend us!
April: Youth Connections adds text messaging to the youth crisis line

May 4: Mentoring Drug & Alcohol Educational Workshop
May 7: 1st presentations to Center Grove Alternative Students about YC programs
May 14: 1st Host Homes placement of 2009
May 19: 1st half of Board Retreat at Franklin College

Youth Connections

Linking Youth, Families & Communities

Celebrating What We Did 2009





at Franklin
nt Middle School

in Transition
ion class

Aug. 15: Jumpstart mentoring Back to School Bash at Providence Park in Franklin

Aug. 25: 1st Merchants Bank volunteered at Youth Connections for the United Way Day of Caring

Aug. 29: 1st Familypalooza

Aug.-Sept.: YC spots on National Public Radio to recruit mentors and Host Homes



Oct. 1: Youth Connections began partnership with Management 2000 (HSO)

Oct. 1: YPIJC Kick-off

Oct. 10: O'Charley's Breakfast benefiting YPIJC

Oct. 15: YPIJC Fall Grant Review Night (10 grants were awarded)

Oct. 18: Pumpkin painting with Jumpstart Mentoring

Dec. 10: New Host Home family become official!

Dec. 10: Whitney Long started as full-time Morgan County Youth Development Coordinator

Dec. 17: Host Homes Training/Holiday Party at Old National Bank.

Dec. 20: Jumpstart Mentoring Holiday Party at Grace United Methodist Church

Dec. 21: Staff adopted a family through UW Christmas Angels-Dropped off wrapped gifts for family.

JULY

AUGUST

SEPTEMBER

OCTOBER

NOVEMBER

DECEMBER

Sept. 9: KIC-IT (Kids In Crisis Intervention Team) event with guest speaker and Homeless Youth advocate Diane Nilan (YC was a sponsor)

Sept. 15: 2nd half of Board Retreat at Franklin College

Sept. 18: 1st presentation to Martinsville Alternative School about SP/HH Programs

Sept. 22: Fall group mentoring begins at Clark Pleasant Middle School



Nov.: YC Strategic Plan for 2010-2013 adopted with four work plans for 2010

Nov.: Mailing of the Annual Campaign! Thanks to all donors!

2009-2010 PROGRAMS

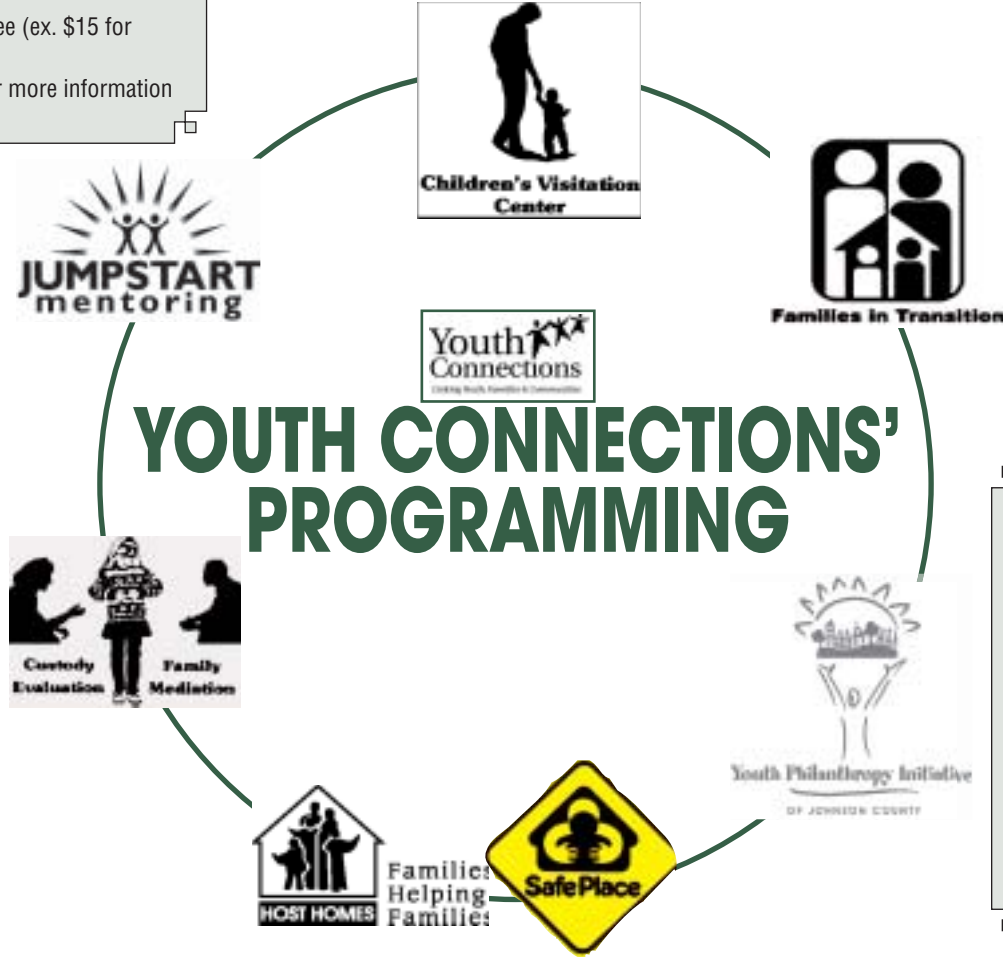
Jumpstart Mentoring
 2009-2010 Funders: Indiana Youth Services Association (Delinquency Prevention through State of Indiana-Department of Child Services), Johnson County Citizens Against Substance Abuse (2009 only), United Way of Johnson County (2009 only), donations
 Partners for group mentoring: Clark Pleasant Middle School and Franklin Community Middle School
 How you can make a difference:
 • Become a mentor! You could be a group or one-on-one mentor.
 • Recruit other mentors
 • Donate gift cards for mentors
 • Pay for a fun outing for a mentor and mentee (ex. \$15 for bowling)
 Contact jumpstart@youthconnections.org for more information

Children's Visitation Center
 2009-2010 Funders: United Way of Johnson County, Department of Child Services, client fees
 Partners: Johnson County Courts, Department of Child Services
 How you can make a difference:
 • Support a family that has been referred by the court and cannot afford to meet their children (\$30/hour for visit)
 • Donate games and toys for children to play with when they visit
 • Donate snacks for visits
 • Donate used furniture for visits
 Contact family@youthconnections.org for more information

Families in Transition
 2009-2010 Funders: United Way of Johnson County, client fees
 Partners: Johnson County Courts, Franklin Community School Corporation
 How you can make a difference:
 • Donate books about the effects of divorce to be given to families
 • Donate snacks for the class
 Contact family@youthconnections.org for more information

Custody Evaluations
 2009-2010 Funders: United Way of Johnson County, Johnson County Commissioners, client fees (offered to clients on a sliding scale fee, all evaluations are done at less than 50% of cost that would be paid to other evaluators), donations
 Partners: Johnson County Courts
 How you can make a difference:
 • Donate games and toys to be used during family observation time
 • Donate snacks for kids during interviews
 Contact family@youthconnections.org for more information

Youth Philanthropy Initiative of Johnson County (YPIJC)
 ***As of January 1, 2010 the Johnson County Community Foundation is now the host of this program, Youth Connections remains a partner (<http://www.jccf.org/Home/GrantsScholarships/YouthGrants/tabid/113/Default.aspx>)
 How you could make a difference:
 • Support a small grant for a community project (\$50-\$500)
 • Participate on the Action Board
 • Help with a fundraising event (the Action Board raises 1/2 of the money for the grants)
 • Volunteer at an YPIJC event (Grant Kick-off, Grant Night, or Grant Celebration)



Safe Place & Host Homes
 2009-2010 Funders: Indiana Juvenile Justice Task Force, State of Indiana (Safe Place funding through Department of Child Services), United Way of Johnson County, United Way of Central Indiana, donations
 Partners: Safe Place Sites and Host Homes Families
 How you can make a difference:
 • Become a Host Home
 • Become a Safe Place Site
 Contact Safeplace@youthconnections.org for more information

PROGRAM IMPACT

Custody Evaluations	2007	2008	2009
Court orders received	54	55	64
Evaluations completed	9	22	19
Total cases closed	39	68	54

Children's Visitation Center	2007	2008	2009
Court-ordered # of visits	91	95	206
Court-ordered # of hours	124	154	429.5
Dept. of Child Services # of visits	n/a	324	224
Dept. of Child Services # of hours	n/a	625	464.5

Safe Place/Host Homes
Participation in Project Safe Place in 2009 (Johnson and Morgan counties)
 Host homes: 4 youth placed in Host Homes for a total of 38 days.
 Youth presented to: 5,961 (at 29 schools)
 Crisis Line phone calls: 52
 Crisis Line text message (new in 2009): 119
 Collateral calls: 83

Families in Transition	2007	2008	2009
Adults	546	506	563
Teens	93	76	111
Youth	138	112	131
Total	777	694	805

Jumpstart Mentoring	Youth	Mentors
Group Mentoring	9	9
One-on-One mentoring	26	25

LEVELS OF GIVING 2009

**Breakfast of Champions
Table Purchasers**

Angela Morris
Barb Miller
Bemis Group
Charles Henderson
Craig Wells
Denise Baird
Donna Englehart
Drainage Solutions
D&S
Endress+Hauser
Franklin College
GG Chamber of Congress
Greenwood/White River Rotary
Heartland Community Bank
Indiana Members Credit Union
Jill Kaps Ramsey
John Reames
Johnson Heating and Cooling
Kappa Kappa Kappa
Katie Schlafer
Kellie Plumbing
Kristi Bruther
Leadership Johnson County
MainSource Bank-Franklin
M&I Bank-Greenwood
Old National Bank-Greenwood
SCS Construction
Susan Stevens and Chip Charles
Sertoma

**Breakfast of Champions
Seat Purchasers**

Emily Hankley-Berger
Cindy Helmich
Tammi Hickman
Mandy Williams

In-Kind Donations

Anytime Fitness
Athens Greek Restaurants
Becky's Barber Shop
Benjamin's
Buca de Beppo
Canary Creek Cinema
Domino's Pizza
Imagination Station
JP Parker Flowers
Ron Kelsay Flowers
Sun Garden Tanning
The Artcraft Theatre
The Guitar Company
Wal-Mart

Friend (\$1-\$99)

Andrew Roesner
Brad and Angela Coy
Cheryl Morphew
Col. Barry Richmond
David Payne and Garnett Vaughn
Denise Baird
Dennis McCrosson
Donna Engelhart
Donna Sipe
Doreen St. Clair
Erin Smith
Fred Freeman
Good Search
J. Giddens
J & S Beck

J. Stolz
Jacueline McNeelan
Jason Burke
James Carroll
James Meyer
Jeffrey and Sharon Beckman
Jill Bode
Karen & Brian Heichelbach
Kathie Turk
Kirk & Cheryl Bixler
Lewis Gregory
Lisa Myers
M. Drew
Paul Jaeger
P&M Davis
Rep. Ralph Foley
Richard Park
Susan and William Hebert
Thelma Slisher
Trent & D McWilliams

Best Friend (\$100-\$199)

A Blackwell
Billy Bemis
Brandyn Ferguson
Chicago's Pizza
Craig Williamson
Eugene Alvarez
Franklin Elks Lodge
HE Henderson
Joe Van Valer
Kim Minton & Gail Richards
Lyman Snyder
Mayor Paris
McGee's
Morgan Hoover
Patricia Rather
Ray Beuning
Robert & Suzy Maher

Roger and Roxanna Robey
S & D Bechman
Skillman Corp
Steve Jones
T. Austin Hohlt
Tony & Sara Milano

Mentor (\$200-\$299)

Anthem
Franklin College
Kindred Healthcare
McCormick
Paul Beczkiewicz
Steve Bechman
Yard Signs, Inc.

Advocate (\$300-\$399)

Kristi Bruther
Bemis Group
Barb Miller
John Reames
Mark and Gail Richards

Guardian (\$400-\$499)

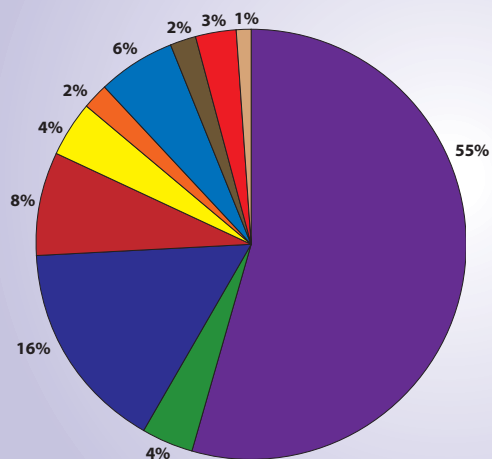
Mutual Savings Bank
Pat Van Valer
Sertoma

Champion (\$500-\$1,000)

1st Merchant's Bank
Angela Morris
Greenwood Machine
Hi-Way Lanes
Jill Kaps Ramsey
Kohl's (Franklin)
Under the Sun

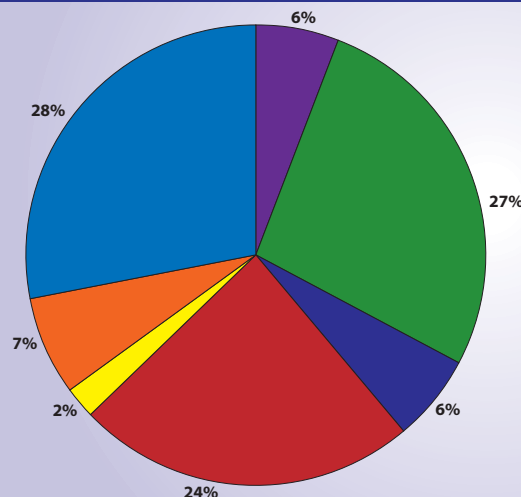
FINANCIALS

Expenses



- Salaries
- Taxes
- Contractual Workers
- Rent, Telephone & Internet
- Promotions, Marketing & Membership Dues
- YPJC Grants
- Equipment / Supplies
- Staff Development & Travel
- Professional Fees
- Insurance

Revenues



- United Way
- IJJTF (through Federal Grant)
- State Grants / Contracts (through DCS)
- Johnson County Commissioners
- Private Grants
- Client Fees
- Fundraising

Youth Connections Familypalooza 2010

Title Sponsor



www.pnc.com

Youth Connections

Linking Youth, Families & Communities

701 W. Madison St.,
Suite H, Franklin, IN 46131

Phone: (317) 738-3273

(765) 516-2264 (Morgan County)

Fax: (317) 738-0437

www.youthconnections.org

Thank you!



Youth Connections wishes to thank the
Elba L. and Gene Portteus Branigin Foundation
for sponsoring us for the cost
of this annual report.