

2015 BOARD OF TRUSTEES

Governed by a board of strong, visionary community leaders

EXECUTIVE BOARD

DAVID PAYNE - President
KELLI SEARLES - VP Governance
MARK RICHARDS - VP Finance
KELSEY KASTING - VP Fund Development
KIM SCHAFSTALL - VP Fund Development
ANGELA MORRIS - VP Programs
KENT PATTERSON - VP Programs

TRUSTEES

| | | | |
|-----------------|----------------|----------------|------------------|
| ERIN BOLLHORST | DANNY COLLIER | BRIAN GOLDFARB | TREG HOPKINS |
| MICHAEL GRIZZLE | ALICIA KING | MICHELLE ROJAS | BRIDGET MCDANIEL |
| KIM SHELL | KATHY STAHLHUT | MEGAN TOLIN | MATT SOLOMON |

LIFETIME TRUSTEES

PAT VANVALER - JOHN REAMES - BEVERLY HART - BILLY BEMIS



Youth Connections

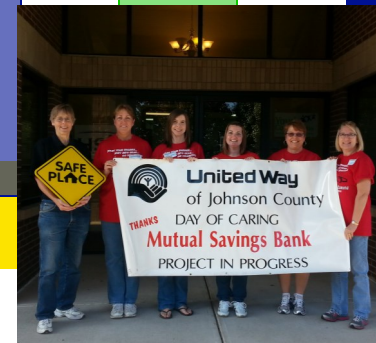
Johnson County Office
460 N Morton St., Suite A
Franklin, IN 46131

Morgan County Office
159 W Morgan St., #1
Martinsville, IN 46131

Phone: 317-738-3273 · Fax: 317-738-0437 · Website: www.youthconnections.org

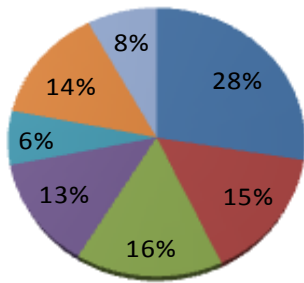


2015 ANNUAL REPORT



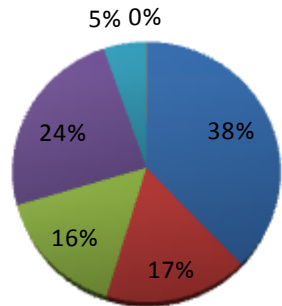
Youth Connections

2015 Expenses - \$349,961



- SAFE PLACE/HOST HOMES
- CHILDREN VISITATION CENTER
- CUSTODY EVALUATIONS
- FUNDRAISING
- JUMPSTART
- FAMILIES IN TRANSITION
- GENERAL

2015 Revenue - \$374,083



- GRANTS & CONTRACTS
- UNITED WAYS
- IN KIND
- FUNDRAISING & DONATIONS
- FEES
- MISCELLANEOUS

FAMILY PROGRAMS

CHILDREN'S VISITATION CENTER
FAMILIES IN TRANSITION
CUSTODY EVALUATION

66 individuals

participated in evaluations that put children first and focus on providing an accurate and



neutral assessment of a child's



180 hours

were spent providing practical information to

690 children and parents

to help them cope effectively with the hurt of divorce and begin the healing process

with their children completing homework, eating dinner, playing and creating memories in a safe and healthy environment.



624 hours

utilized the children's visitation center. Non-custodial parents spent

108 parents

YOUTH SERVICES

JUMPSTART MENTORING
SAFE PLACE
HOST HOMES

received assistance through our Safe Place helpline with resource referrals, wrap-around services and/or placement in a Host Home.

12,688 youth & adults

As a result,

83 youth

the Safe Place message was heard by



96 events

Through community outreach and educational presentations at

39 students

received over

324 hours

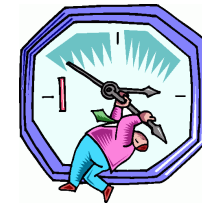


of in-depth, evidence based programming including STEM education programs through LEGO™ Education Robotics and NASA™ Ignite Curriculum.

HOW DID YOU HELP YOUR NEIGHBORS IN 2015?

DONATED MORE THAN **hours**
2400

OF THEIR TIME



STUDENT INTERNS

2

9

HOST HOME FAMILIES

38

INDIVIDUALS

TOTAL POPULATION SERVED

16,748



TOTAL YOUTH REACHED

9,844

OUR EFFECTIVE STEWARDSHIP

.80¢ OF EVERY DOLLAR SUPPORTS DIRECT SERVICES

JUMPSTART PROGRAMMING EXPANDED TO INCLUDE LUNCH GROUPS FOCUSED ON SOCIAL SKILL DEVELOPMENT